

The FIRST undergraduate public health programme in Hong Kong  
For students from ALL disciplines

香港首個公共衛生本科課程 適合各學科同學報讀

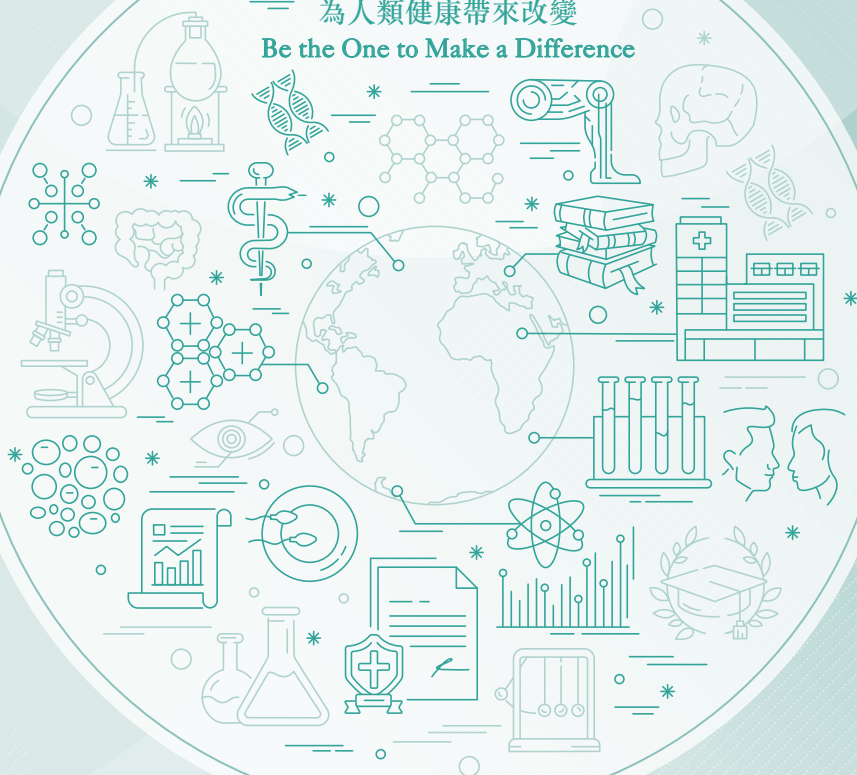
# Bachelor of Science in Public Health

## 公共衛生理學士課程

\* 高瞻・遠矚

為人類健康帶來改變

Be the One to Make a Difference



香港中文大學  
The Chinese University of Hong Kong



香港中文大學醫學院  
Faculty of Medicine  
The Chinese University of Hong Kong



# Director of JC School of Public Health and Primary Care

賽馬會公共衛生及基層醫療學院院長



*Professor Eng-kiong YEOH,*  
*GBS, OBE, JP*  
楊永強教授

“

Our mission is to work with society to enable the conditions in which people can be healthy. We concern ourselves with the wider environment around us, both locally and globally which influences how we live and impacts on our health and wellbeing. Our focus is on how health systems function to ensure everyone who becomes ill has access to effective and appropriate care and there are policies and programmes in place to prevent them from becoming ill in the first place.

我們的使命是與社會各界人士攜手合作，保障民眾的健康；我們亦關注包圍我們並影響我們生活、健康和福祉的本地和國際環境。我們著眼於醫療體系如何確保每個病人能得到有效及合適的治療，以及社會政策和方案來預防疾病和疫症的發生。

”

## Sharing from Students and Alumni

同學及校友分享



*WONG Way Hang, Jonathan*  
王匯恒

2016 Graduate  
2016年畢業生

Completing the BSc Public Health programme has equipped me with practical public health skills such as epidemiology and biostatistics, enriching my knowledge in various global and local public health topics. These knowledge and skills have prepared me for my later work as a Health Inspector at the Food and Environmental Hygiene Department.

During the practicum opportunity in my study, I was attached to a community health centre and visited some patients who had difficulties in accessing healthcare services. This experience cemented my will to contribute in the frontline healthcare field, leading me to pursue further study in medicine eventually.

公共衛生課程不單讓我學習到流行病學及生物統計學等公共衛生知識，更廣泛地認識本地及國際關注的公共衛生議題，有助我畢業後擔任食物環境衛生署衛生督察的工作。

在求學期間的專業實踐機會中，我曾與一位社區護士探訪一些無法獲得適當醫療服務的病人，並為他們提供基本的健康檢查。這次經歷啟發了我矢志投身於前線醫療服務之中，及後決定攻讀內外全科醫學士課程。



*CHEUNG Man Hin*  
張文軒

Year 1 student (2018-19)  
一年級學生 (2018-19年度)

I participated in a Taiwan field study this summer. I have learnt a lot during the site visits to hospitals and hospices and our knowledge exchange with their top medical universities. These interactive experiences not only enabled us to comprehensively examine the leading progress of Taiwan in palliative care, long term care, National Health Insurance and more, but also drew worthy lessons for Hong Kong and other localities to learn from.

Also, I attended an intensive programme at Cambridge University, which broadened my understanding towards some less familiar domains like neuroscience, and invigorated my aspiration to become a top-notch healthcare professional with global outlook.

今年暑假我參加了由學院安排的台灣實地考察。在參觀當地的醫院和療養院及在跟當地的學生和教授們進行知識交流的過程中，我能夠了解台灣在舒緩治療、長期照護和國民健康保險等各方面的發展成果，當中都有值得香港借鑑之處。

此外，我還報讀了英國劍橋大學修讀短期課程。在劍橋的兩個月不但加深了我對神經科學等一些以前不太熟悉的領域知識，同時更促進了我的個人發展，和培養了公共衛生專才應具備的全球視野。

# Public Health is...

## 公共衛生是：



*The science and art of preventing disease, prolonging life and promoting health through the organised efforts of society.*

透過社會各界的力量，以預防疾病、延長壽命和促進健康的一門科學與藝術。

*Sir Donald Acheson*

United Kingdom | 英國



*What we as a society do collectively to assure the conditions in which people can be healthy.*

指作為社會一份子，須團結合力確保人們在理想的環境下活得健康。

*Institute of Medicine | 醫學研究所*

United States | 美國

Public Health is about your health, and the health of the world at large, which is the crucial key to how our society achieves and sustains conditions that maximise the health and well-being of our populations. Amid contemporary issues in public health including obesity, pollution, control of infectious and chronic diseases, and injury prevention require urgent attention.

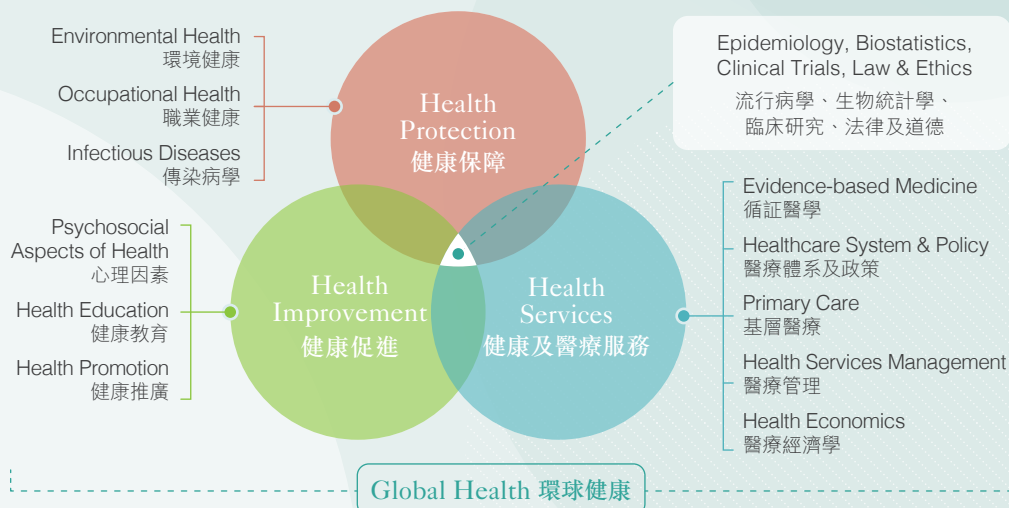
The responsibility of public health professionals is to have a holistic understanding of communities—weaving insight from past experiences with our diverse populations to foresee potential challenges in everyday health. They are tasked with planning and implementation of health services, the control and prevention of disease, as well as policies for the population's health.

公共衛生關乎你的個人健康、社區健康、甚或環球健康，是達致和維持全民最佳的健康決定性關鍵。肥胖與營養、污染、傳染病及慢性病的控制和預防傷害只是現時其中一些需要處理的公共衛生重要議題。

公共衛生專才的責任，是對社區的公共衛生有整體的瞭解——透徹分析過往、現在甚至將來的趨勢和挑戰，在醫療服務管理、傳染病預防與控制、訂立最佳的政策來宣揚健康生活模式給大眾。

## Three Domains in Public Health

### 公共衛生三大領域



# Introduction of BSc in Public Health

## 公共衛生理學士課程簡介

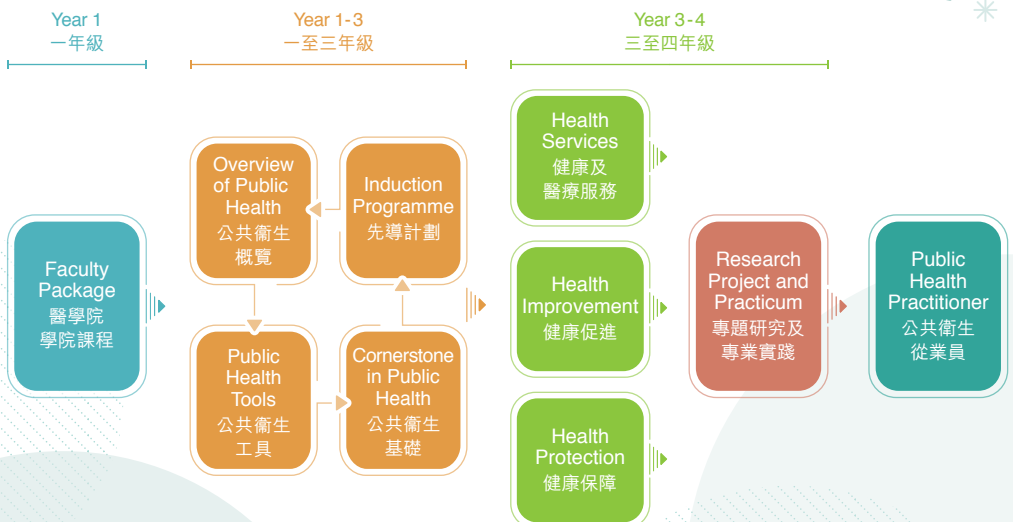


At the vanguard of public health education, the JC School of Public Health and Primary Care of the Faculty of Medicine has designed the first public health undergraduate programme in Hong Kong, Bachelor of Science in Public Health (BSc in Public Health). This programme is benchmarked against world-class universities in Australia, the United Kingdom and the United States.

醫學院轄下的賽馬會公共衛生及基層醫療學院作為公共衛生教育的先驅，在香港編訂首個公共衛生理學士學位課程，以澳洲、英國和美國的世界級大學課程作基準，讓對公共衛生感興趣的學生在大眾健康範疇上擴闊視野。

## BSc in Public Health Process Model

### 公共衛生理學士修業模式



# Career Development of Graduates in Recent Years

## 近年畢業生發展路向



## Articulation

### 升學銜接

Graduates apply for the following programmes and meet relevant requirements are eligible to have credit exemption:

畢業生報讀以下課程並符合相關要求可獲學分豁免：

Programme 課程	Eligible Period 有期年期	Credit Exemption 學分豁免
Master of Public Health, CUHK 香港中文大學公共衛生碩士課程	within 2 years of graduation 畢業後2年內	maximum of 12 units 最高12學分
Postgraduate Diploma in Occupational Hygiene*, CUHK 香港中文大學職業衛生深造文憑課程*	within 3 years of graduation 畢業後3年內	maximum of 1 unit 最高1學分

\* Subject to approval | 有待審批

## Admission Requirements

### 收生要求

Local Students (JUPAS)  
本地學生（大學聯合招生辦法）

JUPAS Code: **JS4537**

Applicants are required to fulfill the minimum University admission requirements. They shall have obtained in the Hong Kong Diploma of Secondary Education (HKDSE) Examination the same or higher qualification as listed below:

申請人必須於香港中學文憑考試中考獲以下等級或以上成績，以符合大學最低入學要求：

Core Subjects 核心科目				2 Elective Subjects 兩科選修科目
Chinese 中國語文	English 英國語文	Mathematics 數學	Liberal Studies 通識教育	
3	3	2	2	3



For details, please visit the University website at:  
詳情請瀏覽大學網址：

<http://admission.cuhk.edu.hk/jupas/requirements.html>

Local Students (Non-JUPAS) & International Students

本地學生（非大學聯合招生辦法）及海外學生

For details, please visit the University website at:

有關詳情，請瀏覽大學網址：



Local Students (Non-JUPAS):  
本地學生（非大學聯合招生辦法）：

<http://admission.cuhk.edu.hk/non-jupas-yr-1/requirements.html>



International Students:  
海外學生：

<http://admission.cuhk.edu.hk/international/requirements.html>



# Gaining Exposure while Studying

## 加強學習經歷

### Experiential Learning 體驗學習模式

#### Induction Programme 先導計劃

Students will participate in site visits that cover government sectors, private sectors and non-governmental organisations to explore the students' perspective on professional public health practices.

學生將會被安排到不同地點參觀，包括政府部門、私人機構和非政府組織，藉此令學生掌握專業公共衛生的實踐。



Hospital Authority  
醫院管理局

#### Research Project and Practicum 專題研究及專業實踐

Students are requested to complete 100 hours of field work and a research project based on the chosen field of interest with the guidance of a supervisor. It is an essential experience which develops student's understanding, analytical and researching skills as well as critical thinking in a particular subject.

學生須在導師督導下，為某一特定公共衛生議題進行專題研究及須完成100小時的實習工作。這是寶貴的學習經歷，可加強學生的理解及分析能力，加強研究和解難技巧。



St. Paul's Hospital  
聖保祿醫院

### Student Activities 學生活動



Student Society  
學生會

Student  
Orientation Camp  
學生迎新營



Teacher-Student  
Gathering  
師生聚會



#### Internal and External Activities 校內校外的課外活動

Students are encouraged to participate in various internal and external activities to fully explore their potentials and creativity, as well as achieve whole-person development.

本院鼓勵學生積極參與校內校外的課外活動，讓他們能夠盡展潛能，發揮無窮創意，從而達致均衡的全人發展。

Graduation  
Photo Day  
畢業生拍照日



Spring Dinner  
春茗



Mental Health Association  
香港心理衛生會



Centre for Health Protection  
衛生防護中心





## Enrichment Activities 增益活動

### Mentorship Scheme 師友計劃

Students will be invited to join the Mentorship Scheme which provides a valuable opportunity for establishing network, exposure to diverse perspectives, and career development.

學生透過參與師友計劃，獲得建立其人際網絡、擴闊視野及發展他們事業計劃的寶貴機會。



### Peer Assisted Study Session(PASS) 友儕輔學時間

PASS is a program where students work together to consolidate understanding, reinforce key concepts and develop effective study strategies. Each session is facilitated by PASS Leaders: students who have excelled in the course in the past.

這項計劃以科目為單位，招募過往修讀過該科目而成績優異的學生成為「友儕領袖」，協助學生鞏固學習基礎及開創有效的讀書策略。



### Student Exchange Programme 交換生計劃

Exchange opportunities are offered to our students. By participating in exchange programmes, students can experience different learning environments and cultures, and broaden their horizons.

學生參加由本課程、大學或書院舉辦的交換生計劃，藉此體驗不同的學習環境及文化，擴闊視野。



### Field Studies Course and Study Tour 野外考察課程及交流團

Field studies course and study tours will be arranged to broaden the horizons of students, and to explore regional healthcare system in the summer.

學生參加野外考察課程及交流團，藉此機會擴闊視野、學習及探討地區的醫療體系。



Taipei Field  
Studies 2019  
台北野外  
考察課程 2019



Seoul Study Tour 2018  
首爾交流團2018

# Awards and Scholarship

## 獎項與獎學金



Our School and University offer a number of awards and scholarships to recognize students with outstanding performance and encourage students to participate in diverse learning activities.

Partial list of awards and scholarships offered by JCSPHPC to our undergraduate students in academic year 2019-20:

### In recognition of outstanding academic or research achievement

- Kiang Ping Fai Scholarship
- Pearl Island Lions Club Public Health Scholarship
- To Teuk Ki Public Health Research Project Outstanding Award
- Mr. & Mrs. Rusy M. Shroff Scholarship
- South China Venture Capital Outstanding Practicum Poster Prize

### To encourage overseas exchange

- South China Venture Capital Overseas Exchange Scholarship
- Pure Heart Academic Exchange Scholarship
- Pure Heart Overseas Exchange Scholarship
- Pure Heart Study Tour Subsidy Scheme

本院及大學均設立多項獎項及獎助學金，藉以肯定表現傑出之學生及鼓勵學生投入多元化的學習。

賽馬會公共衛生及基層醫療學院於2019-20學年向本科生提供的部分獎項與獎助學金：

### 表揚學業成績或研究成果類

- 姜炳輝獎學金
- 明珠獅子會公共衛生獎學金
- 杜琢其公共衛生專題研究傑出表現獎
- 勞士施羅孚先生夫人獎學金
- 中南創投基金優秀實習報告海報獎

### 鼓勵海外交流類

- 中南創投基金海外交流獎學金
- 初心學術交流獎學金
- 初心海外交流獎學金
- 初心遊學資助計劃

## Programme Website

課程網頁



[www.bsc.sphpc.cuhk.edu.hk](http://www.bsc.sphpc.cuhk.edu.hk)

## Contact Information

聯絡方法

Address 地址	Room 202C, 2/F School of Public Health Building Prince of Wales Hospital, Shatin New Territories, Hong Kong 香港新界沙田威爾斯親王醫院 公共衛生學院大樓二樓202C室
Tel 電話	(852) 2252 8427
Fax 傳真	(852) 2145 7489
Email 電郵	sphpc_ug@cuhk.edu.hk
Website 網址	<a href="http://www.bsc.sphpc.cuhk.edu.hk">www.bsc.sphpc.cuhk.edu.hk</a>
Facebook	public.health.cuhk